

COUNTY OF CHARLESTON



CTC 2023 RESURFACING : PLAN A
June 6, 2023

TABLE OF CONTENTS

<u>DESCRIPTION</u>	<u>SHEET NO.</u>
COVER SHEET.....	1
TABLE OF CONTENTS.....	2
PLAN MAP.....	3
PLAN SHEET.....	4
ROAD LIST BY LOCATION	5
WORK ITEM SUMMARY.....	6
STRIP MAPS.....	7-8
RUMBLE STRIPS.....	9-10



CTC 2023 Resurfacing Plan A: Construction Notes

1. Please note that due to SCDOT hourly lane prohibitions for River Road (S-54), construction must occur between 7:00pm – 6:00am.
2. River Road is to be milled 4" and replaced with 200 lbs/sy of both Intermediate and Surface B Warm Mix Asphalt unless otherwise directed by the County. Full-depth asphalt patching has been added to the contract as a contingency to address any base failures that are found after the road has been milled.
3. Per the scope of work, payments will be paid as each road is substantially completed. Substantially complete shall generally be defined as all items being complete with the exception of permanent pavement markings and permanent vegetation. No payment shall be made for items completed on road that are not substantially complete by the end of the invoice period.
4. This project includes the installation of wet reflective permanent pavement markings in both tape and thermoplastic forms. The tape form shall be used for the yellow centerline and thermoplastic for the white edge lines. The pavement markings shall include the 18/50 Utah Blend of Glass Beads with a 50/50 series of microcrystalline ceramic beads. Additional Specification detailed in the County Special Provision.

A representative from the pavement marking manufacture must be present during installation of the permanent pavement markings to ensure the pavement markings are being installed per manufactures guidelines. The sub-contractor installing the material shall be approved by the manufacturer. If the pavement markings start to fail or no longer adhere to the pavement before the end of the warranty period, the contractor is responsible to remove and replace the pavement markings within 72 hours with approval from the Pavement Manager.

In addition, this project includes the installation of a 4" Sinusoidal Rumble Strip ("Mumble Strip") along the edge lines.

Please refer to County Special Provisions for additional information.

Road List By Area

Map# Street Name

State Route
Number

County
District

Johns Island Wadmalaw

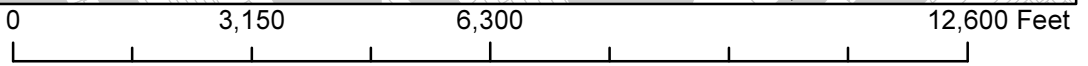
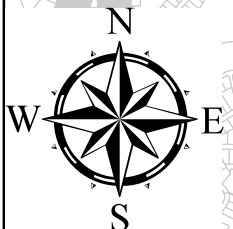
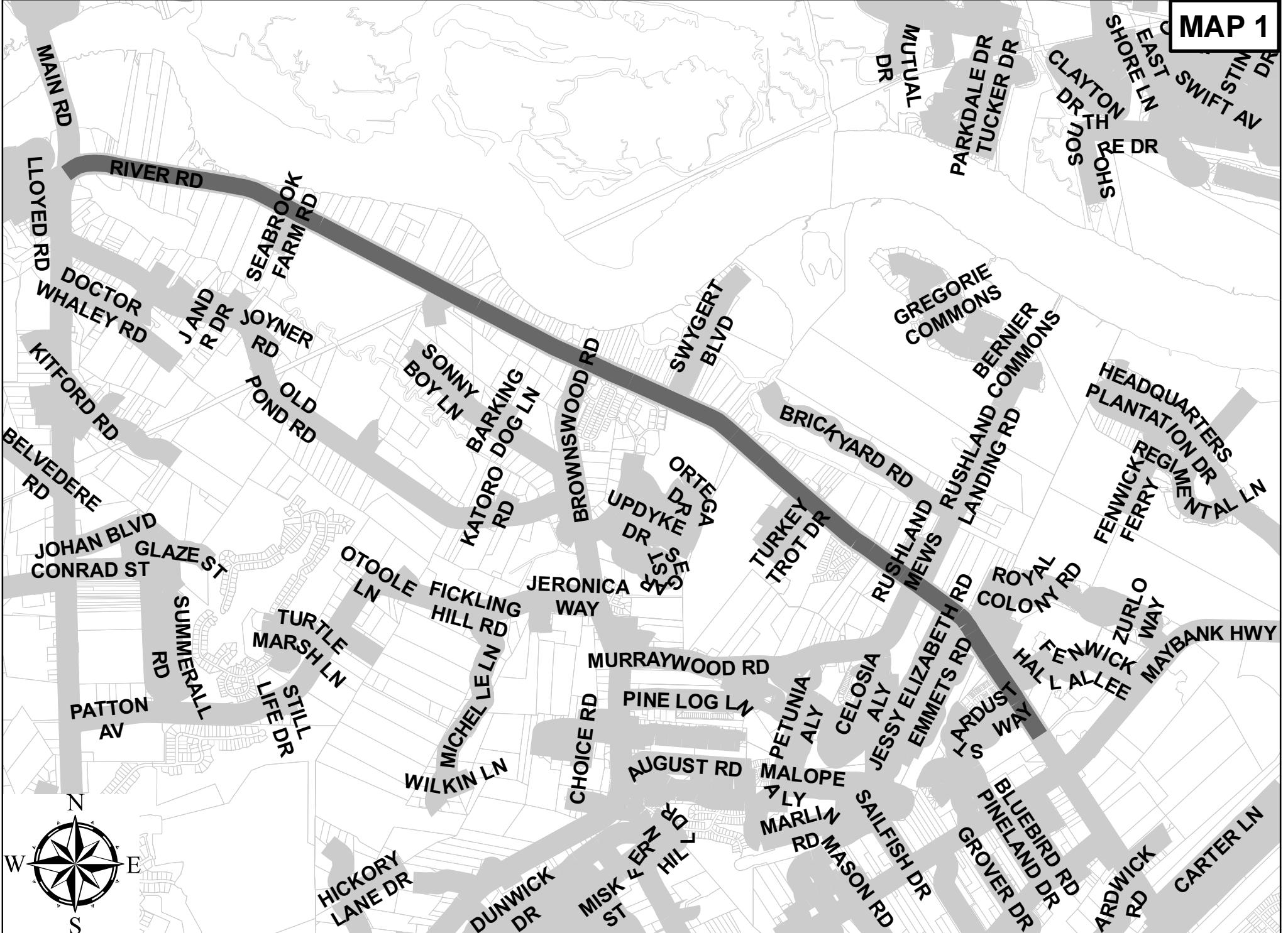
1	RIVER RD	54	8
---	----------	----	---

Quantity Sheet

<u>SCDOT Spec</u>	<u>Description</u>	<u>Quantity</u>	<u>Unit</u>
1071000	TRAFFIC CONTROL	1	LS
2023000	REMOVAL & DISPOSAL OF EXISTING PAVEMENT (CONCRETE DRIVEWAY AS DIRECTED) *	100	SY
2033000	BORROW EXCAVATION (FOR SHOULDERS) *	950	CY
4011004	LIQUID ASPHALT BINDER PG 64-22	1027	TONS
4012040	"FULL DEPTH ASPH. PAV. PATCHING 4'" UNIFORM"	3500	SY
4013400	"MILLING EXISTING ASPHALT PAVEMENT 4'"	75550	SY
4019000S	4" Sinusoidal Rumble Strip (edge line)	10	MI
4030340D	HOT MIX ASPH. CONC. SURF. CR. TYPE C FOR DRIVES	1050	TONS
4110320	WARM MIX ASPHALT SURFACE COURSE TYPE B	8560	TON
4112320	WARM MIX ASPHALT INTERMEDIATE COURSE TYPE B	8560	TON
6241005E	4" WHITE BROKEN LINES(GAPS EXCL.)PERM.PVMT.MARKING WET REFLECTIVE	340	LF
6241010E	4" WHITE SOLID LINES (PVT. EDGE LINES) PERM.PVMT.MARKING WET REFLECTIVE	56000	LF
6241020E	12" WHITE SOLID LINES - PERM.PVMT.MARKINGS WET REFLECTIVE	100	LF
6241023	12IN X 18IN WHITE TRIANG. YIELD BAR (GAPS EXC)PERM.PVMT.MARK	20	LF
6241025	24" WHITE SOLID LINES (STOP/DIAG LINES)-PERM.PVMT.MARKING	450	LF
6241030	WHITE SINGLE ARROWS (LT, STRGHT, RT) PERM.PVMT.MARKING	8	EA
6241035	WHITE WORD MESSAGE - ONLY, SLOW, STOP -PERM.PVMT.MARKING	9	EA
6241064T	4" YELLOW BROKEN LINES(GAPS EXC)PERM.PVMT.MARKING TAPE WET REFLECTIVE	4000	LF
6241074T	4" YELLOW SOLID LINES PERM.PVMT.MARKING TAPE WET REFLECTIVE	30100	LF
6250005	"4'" WHITE BROKEN LINES -(GAPS EXCLUDED) - FAST DRY PAINT"	340	LF
6250010	"4'" WHITE SOLID LINES (PVT. EDGE LINES) - FAST DRY PAINT"	56000	LF
6250020	12" WHITE SOLID LINES - FAST DRY PAINT	100	LF
6250025	"24'" WHITE SOLID LINES (STOP/DIAGONAL LINES) - FAST DRY PAINT"	450	LF
6250030	"WHITE SINGLE ARROW (LEFT, STRAIGHT, RIGHT) - FAST DRY	8	EA
6250035	"WHITE WORD MESSAGE - ONLY, SLOW, STOP - FAST DRY PAINT	9	EA
6250105	"4'" YELLOW BROKEN LINES -(GAPS EXCLUDED) - FAST DRY PAINT"	4000	LF
6250110	"4'" YELLOW SOLID LINE (PVT. EDGE & NO PASSING) - FAST DRY PAINT"	30100	LF
6251023A	12IN X 18IN WHITE TRIANG. YIELD BAR (GAPS EXC) FAST DRY PAINT*	20	EA
6300005	"PERMANENT CLEAR PAVEMENT MARKERS - MONO-DIR. - 4'"x4'"**	100	EA
6301100	"PERMANENT YELLOW PAVEMENT MARKER BI- DIR. - 4'"x4'"**	360	EA
609115H	PREF.FLEX.WET RETRO.PVMT.MARK(T-2)TEMP.REMOVABLE4"YEL.SOLID PREF.	30100	LF
609115H-B	PREF.FLEX.WET RETRO.PVMT.MARK(T-2)TEMP.REMOVABLE4"YEL.BROKEN PREF.	4000	LF

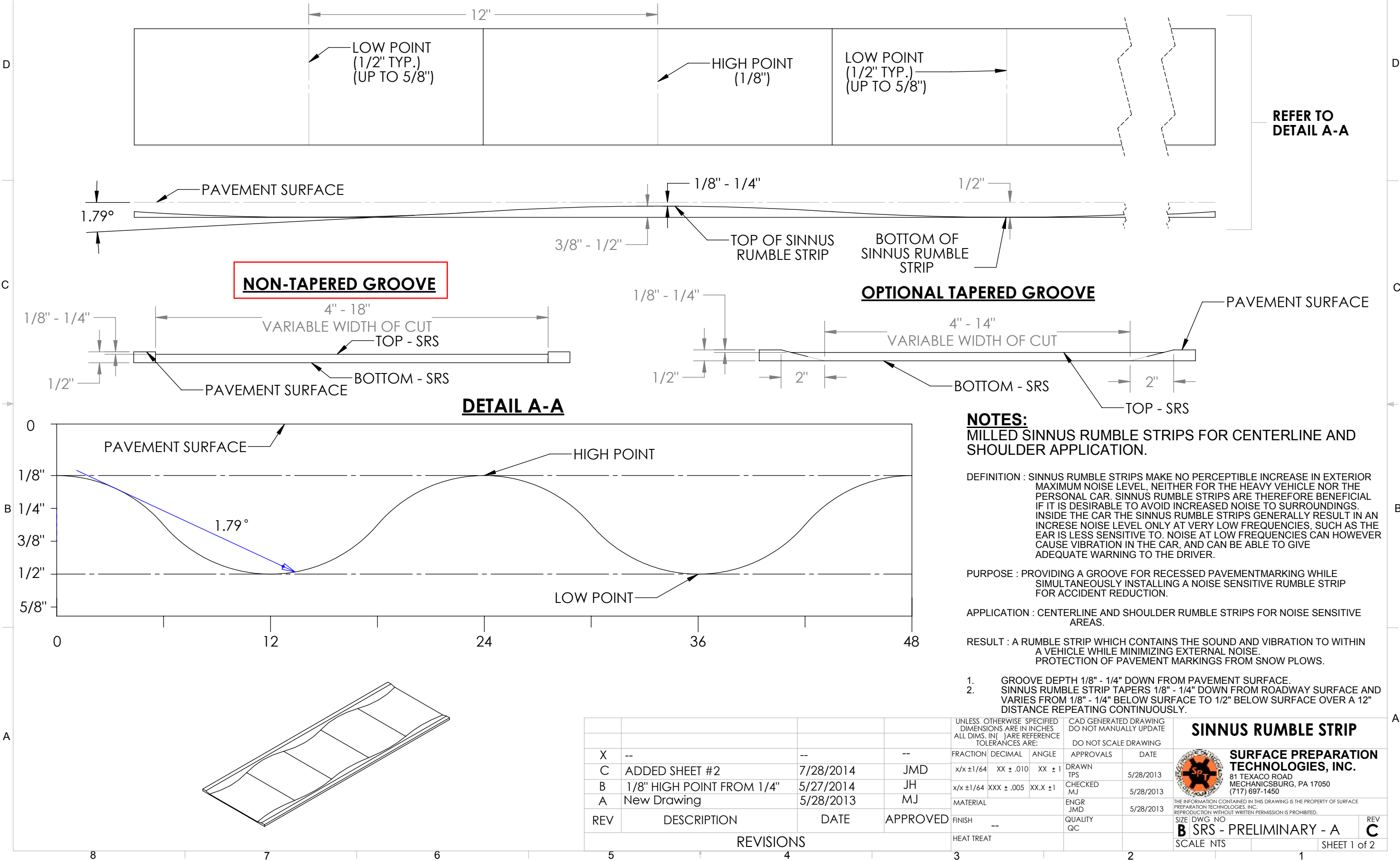
*IFB Addendum #2:
6250105 and 6250110 Removed.
609115H and 609115H-B Added.*

MAP 1



[illegible]

CTC 2023 Resurfacing Plan A to be completed as non-tapered groove with 4" width.



				UNLESS OTHERWISE SPECIFIED DIMENSIONS ARE IN INCHES ALL DIMS. IN () ARE REFERENCE TOLERANCES ARE:	CAD GENERATED DRAWING DO NOT MANUALLY UPDATE
X	--	--	--	FRACTION DECIMAL ANGLE	APPROVALS DATE
C	ADDED SHEET #2	7/28/2014	JMD	x/x ± 1/64 XX ± .010 XX ± 1	DRAWN TPS 5/28/2013
B	1/8" HIGH POINT FROM 1/4"	5/27/2014	JH	x/x ± 1/64 XXX ± .005 XX.X ± 1	CHECKED MJ 5/28/2013
A	New Drawing	5/28/2013	MJ	MATERIAL	ENGR JMD 5/28/2013
REV	DESCRIPTION	DATE	APPROVED	FINISH --	QUALITY QC
				HEAT TREAT	

SINNUS RUMBLE STRIP

**SURFACE PREPARATION TECHNOLOGIES, INC.**
81 TEXACO ROAD
MECHANICSBURG, PA 17050
(717) 697-1450

THE INFORMATION CONTAINED IN THIS DRAWING IS THE PROPERTY OF SURFACE PREPARATION TECHNOLOGIES, INC. REPRODUCTION WITHOUT WRITTEN PERMISSION IS PROHIBITED.

SIZE	DWG NO	REV
B	SRS - PRELIMINARY - A	C
SCALE	NTS	SHEET 1 of 2

